

# Instructions for Type W Instrument Switch



Instructions and  
Renewal Parts Data  
37-150.IS.1

## MOUNTING

To mount switch on panel, remove the indicator screw or machine screw and pull handle from shaft. Remove nameplate. Take out mounting screws and remove dial plate. Place switch on rear of panel with shaft extending through panel. Replace dial plate on shaft on front of panel and fasten securely to switch with mounting screws. Replace nameplate. Fasten handle on shaft with indicator screw or machine screw.

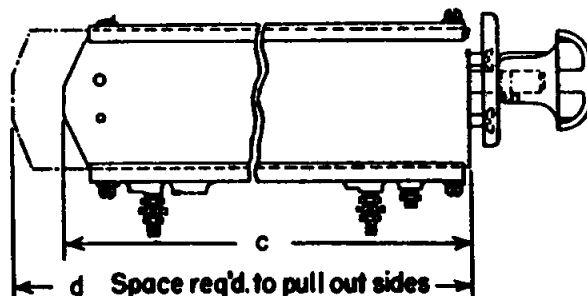
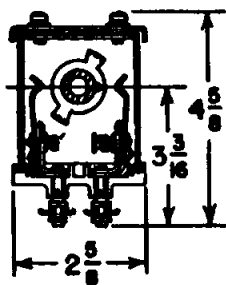
To remove rectangular nameplate, remove the indicator screw or machine screw and pull handle from shaft. Remove nameplate by pressing in and up at the top, then lift out.

To replace rectangular nameplate set nameplate in top slot of dial plate then snap into position by pressing in and down at the bottom.

**Important:** Indicator screw or indicator rib on modern handle must point in the same direction as arrow stamped on end of shaft.

table of outline dimensions

number of points per switch	c	d
2	4-13/32	8-7/16
3	5-1/4	10-1/8
4	6-3/32	11-13/16
5	6-15/16	13-1/2
6	7-25/32	15-3/16
8	9-15/32	18-9/16
10	11-5/32	21-15/16
11	12	23-5/8



outline dimensions

## REMOVING DRUM

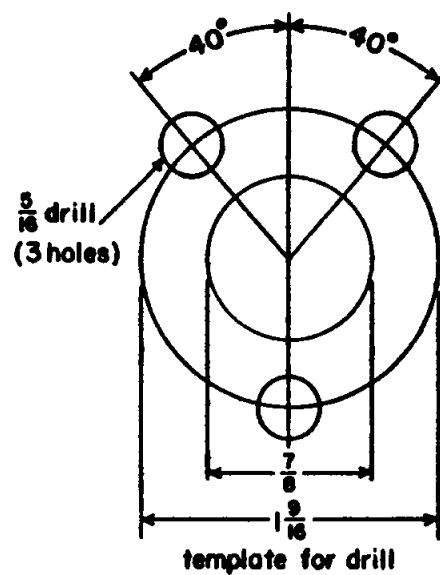
To remove drum, take out indicator screw or machine screw and pull handle from shaft. Remove rear end plate and pull drum out from the rear.

## DISMANTLING DRUM

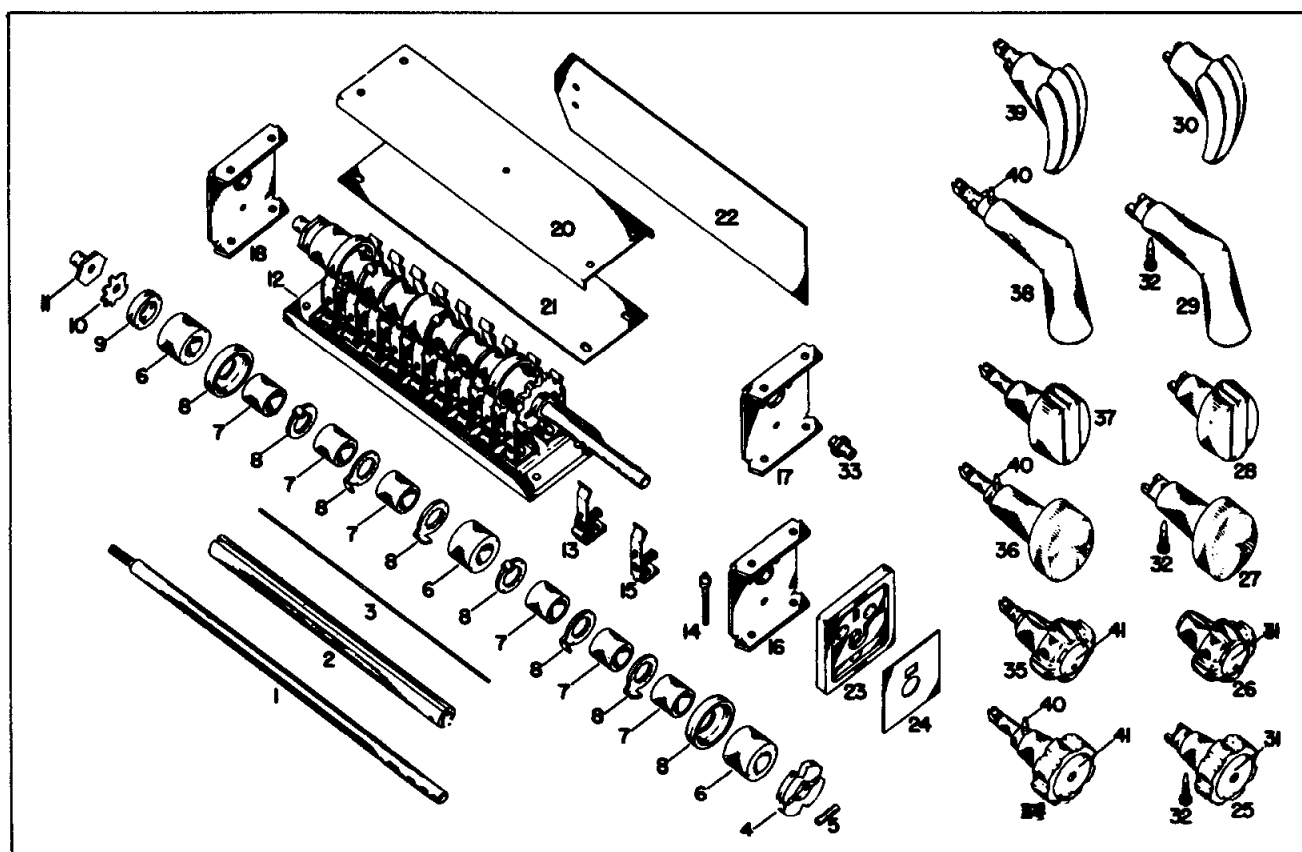
To dismantle drum, release locking clip, remove nut from end of shaft. When renewing parts on drum, the various segments must be replaced in their original position. The key-way number on each segment indicates the exact position of segment on drum.

## ORDERING INFORMATION

- Name the part and give its identification number.
- Give the complete nameplate reading of switch.
- State method of shipment desired.
- Send all orders or correspondence to nearest sales office of the company.
- Combine orders to total at least five dollars as this is minimum charge.



drilling plan--to scale



ref. no.	name of part	ref. no.	name of part
..	switch complete	22	side plate
..	drum complete	23	dial plate
1	shaft	24	dial name plate
2	insulating tube	25	heavy duty round handle
3	notch key	26	modern round handle
4	star wheel stop	27	heavy duty oval handle
5	star wheel stop pin	28	modern oval handle
6	insulating spacer	29	heavy duty pistol grip handle
7	metal spacer	30	modern pistol grip handle
8	contact segment	31	handle name plate
9	end spacer	32Ø	indicator screw
10	locking clip	33	key bearing
11	spacer nut	34	heavy duty round operating key
12	base	35	modern round operating key
13	stationary contact finger	36	heavy duty oval operating key
14	contact finger terminal screw	37	modern oval operating key
15	stop finger	38	heavy duty pistol grip operating key
16	front end plate with bearing	39	modern pistol grip operating key
17	front end plate	40Ø	indicator screw
18	rear end plate with bearing	41	name plate
19*	drum shaft spacing collar		
20	top cover		
21	top cover lining		

\* not illustrated Ø not used with modern handle or modern key  
 parts indented are included in the part under which they are indented

Representative View of Type W Instrument Switch

**Westinghouse Electric Corporation**

Switchgear Division, East Pittsburgh, Pennsylvania 15112

Printed in U.S.A.