



control switch
type W

renewal
parts data
37-150.CS.1

switchgear apparatus

Instructions

To mount switch on panel, remove the indicator screw or machine screw and pull handle from shaft. Remove nameplate. Take out mounting screws and remove dial plate. Place switch on rear of panel with shaft extending through panel. Replace dial plate on shaft on front of panel and fasten securely to switch with mounting screws. Replace nameplate. Fasten handle on shaft with indicator screw or machine screw.

To remove rectangular nameplate, remove the indicator screw or machine screw and pull handle from shaft. Remove nameplate by pressing in and up at the top, then lift out.

To replace rectangular nameplate set nameplate in top slot of dial plate then snap into position by pressing in and down at the bottom.

IMPORTANT: Indicator screw or indicator rib on modern handle must point in the same direction as arrow stamped on end of shaft.

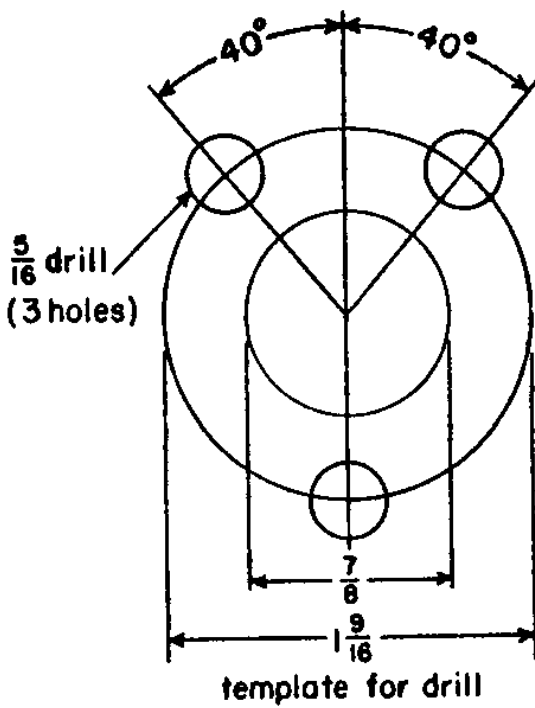
To remove drum, take out indicator screw or machine screw and pull handle from shaft. Remove rear end plate and pull drum out from the rear.

To dismantle drum, release locking clip, remove nut from end of shaft. When renewing parts on drum, the various segments must be replaced in their original position. The key-way number on each segment indicates the exact position of segment on drum.

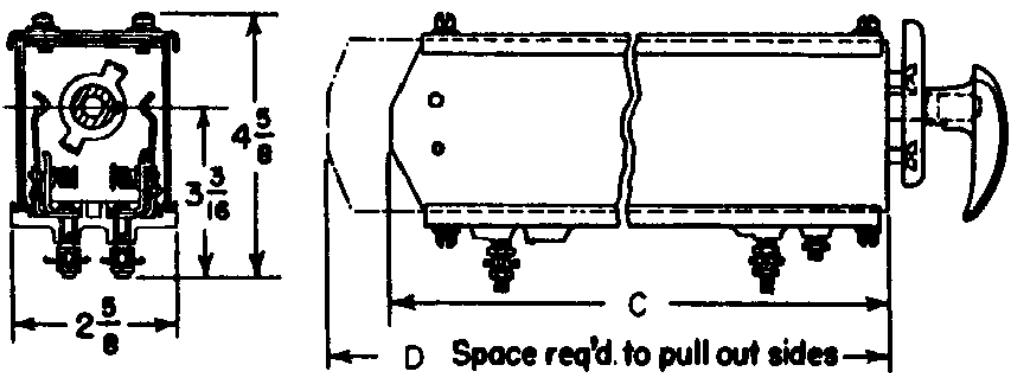
Table of Outline Dimensions

| number of points per switch | c | d |
|--------------------------------|---------|----------|
| 2 | 4-13/32 | 8-7/16 |
| 3 | 5-1/4 | 10-1/8 |
| 4 | 6-3/32 | 11-13/16 |
| 5 | 6-15/16 | 13-1/2 |
| 6 | 7-25/32 | 15-3/16 |
| 8 | 9-15/32 | 18-9/16 |
| 10 | 11-5/32 | 21-15/16 |
| 11 | 12 | 23-5/8 |

drilling plan—to scale



outline dimensions

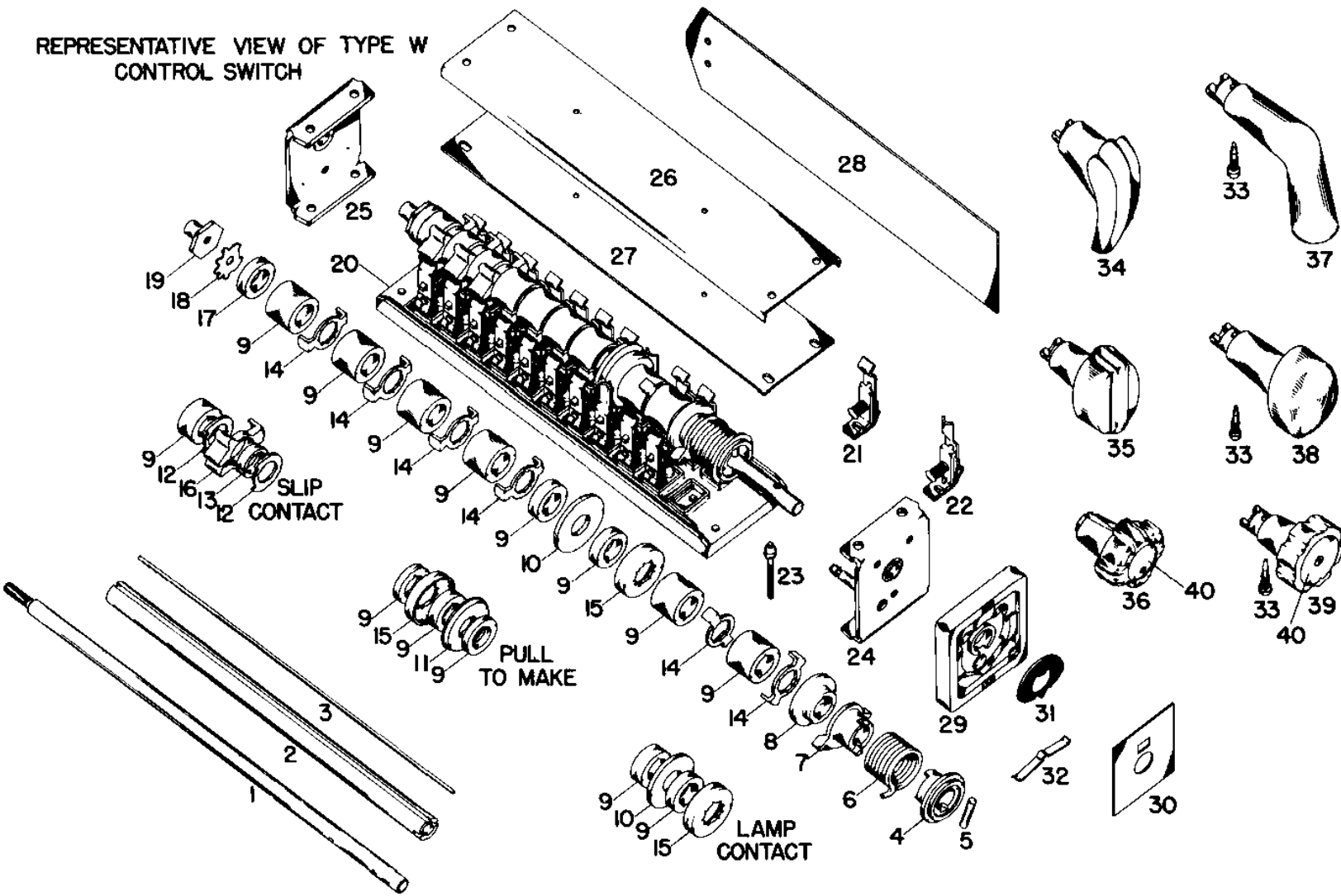


renewal
parts data
37-150.CS.1

control switch
type W



switchgear apparatus



| ref no. | name of part | ref no. | name of part |
|---------|-----------------------------|---------|-------------------------------|
| .. | switch complete | 20 | base |
| .. | drum complete | 21 | stationary contact finger |
| 1 | shaft | 22 | lamp circuit contact finger |
| 2 | insulating tube | 23 | contact finger terminal screw |
| 3 | notch key | 24 | front end plate with bearing |
| 4 | centering spring spacer | 25 | rear end plate with bearing |
| 5 | centering spring spacer pin | 26 | top cover |
| 6 | centering spring | 27 | top cover lining |
| 7 | centering spring stop | 28 | side plate |
| 8 | stop spacer | 29 | dial plate |
| 9 | insulating spacer | 30 | dial nameplate |
| 10 | insulating washer | 31 | target indicator |
| 11 | bevel washer | 32 | target indicator spring |
| 12 | slip stop washer | 33Ø | indicator screw |
| 13 | slip spacer | 34 | modern pistol grip handle |
| 14 | contact segment | 35 | modern oval handle |
| 15 | lamp contact segment | 36 | modern round handle |
| 16 | slip contact segment | 37 | heavy duty pistol grip handle |
| 17 | end spacer | 38 | heavy duty oval handle |
| 18 | locking clip | 39 | heavy duty round handle |
| 19 | spacer nut | 40 | round handle nameplate |

Ø not used with modern handle
parts indented are included in the part under which they are indented

ordering information

- Name the part and give its identification number.
- Give the complete nameplate reading.
- State method of shipment desired.
- Send all orders or correspondence to nearest sales office of the company.

supersedes issue dated May, 1955

effective May, 1957

Westinghouse Electric Corporation • Switchgear Division • East Pittsburgh, Pennsylvania