

Switchgear
Indicating Lamp Assemblies
24, 48, 110 to 125, 220 to 250 Volts Ac or Dc



March, 1968

Supersedes 11/66 Issue

DESCRIPTION

Allis-Chalmers modern indicating lamps are designed for visual or pilot light indication on switchboards, panels, controls and switchgear. These rugged lamps are compact, simple in construction, and require very little panel space for mounting.

1. HOUSING

The socket section is made of general purpose phenolic. All contacts are nickel-plated and comply with Military Standard Specifications MS #33586. The metal threaded mounting bushing is chrome plated. The housing mounts from the front of the panel thru a 3/4 inch diameter opening.

2. LENS

Lenses are the fluted type available in finishes of red, green, amber, blue and clear. The white finish is available in an opaque type lens. They are threaded and easily removed from the front of the panel.

3. LAMP BULB

Pilot lamp bulb type 28PSB (Pilot Short Base) is the telephone switchboard slide contact type base and is 1.075 inches long with a bulb diameter of 1/4 inch. The pilot lamp bulb has a current rating of 35 to 45 ma and designed to give a minimum of 6000 hours life at rated voltage. The nickel-plated slide contacts on the lamp complies with Military Standard Specification MS 33586.

The lamp bulb slips into the housing from the front after the lens is unscrewed. A bulb extractor is provided with every accessory list.

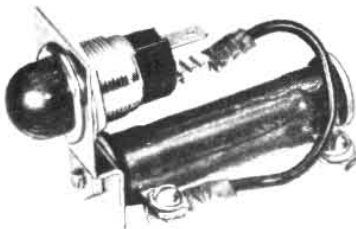
ORDERING INSTRUCTIONS

Order parts by style number. When ordering complete unit, specify circuit voltage, and color of cap desired. When ordering resistor mounting assembly specify circuit voltage.

SPECIAL NOTE:

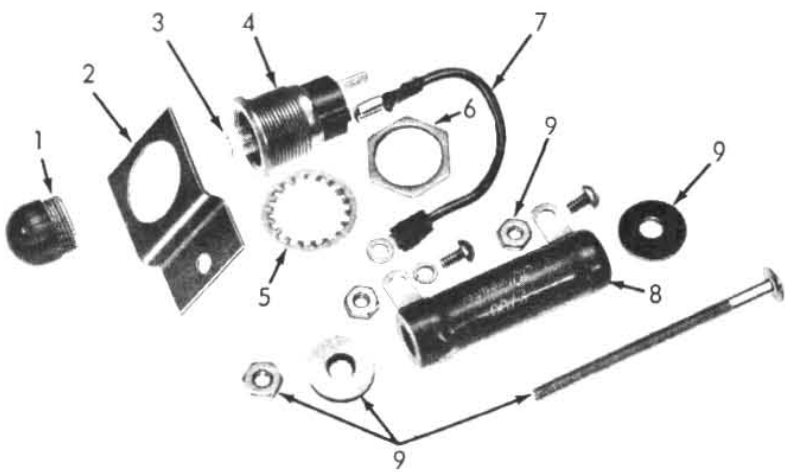
1. Single lamp assembly requires one lamp assembly and one resistor assembly.

Description	Style Number	Net Price Each	Net Price Ea. Per Quantity of 50 or more
Indicating lamp assembly (Complete with housing, bulb and lens)	Red 00-871-091-281 Green 00-871-091-282 Blue 00-871-091-283 Clear 00-871-091-284 Amber 00-871-091-285 White 00-871-091-286	\$ 1.90 1.90 1.90 1.90 1.90 1.90	\$ 1.70 1.70 1.70 1.70 1.70 1.70
Lens	Red 00-871-096-102 Green 00-871-096-103 Blue 00-871-096-104 Clear 00-871-096-105 Amber 00-871-096-106 White 00-871-096-206	.40 .40 .40 .40 .40 .40	.35 .35 .35 .35 .35 .35
Lamp bulb - 28 Volt (28PSB) (.035 to .045 Amperes)	00-857-321-280	.80	.70
Resistor Mt'g Assem. (Complete with resistor, brkt. and wire jumper)			
6000Ω-240V.AC	18-194-791-501	2.00	1.80
2700Ω-120V.	18-194-791-502	2.00	1.80
600Ω-48V.	18-194-791-503	2.00	1.80
50Ω-24V.	18-194-791-504	2.00	1.80
7300Ω-250V.DC	18-194-791-505	2.00	1.80



Single Lamp

COMPLETE ASSEMBLY
STYLE NO. 00-871-091



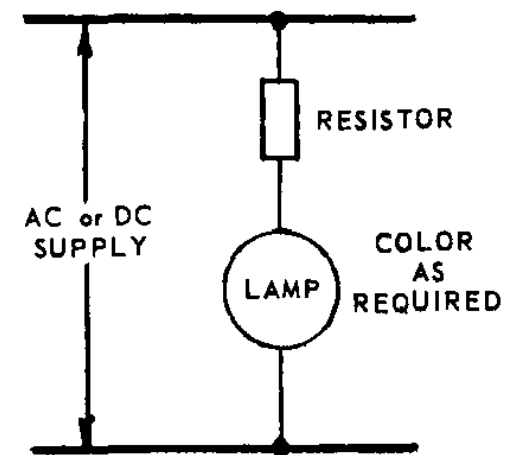
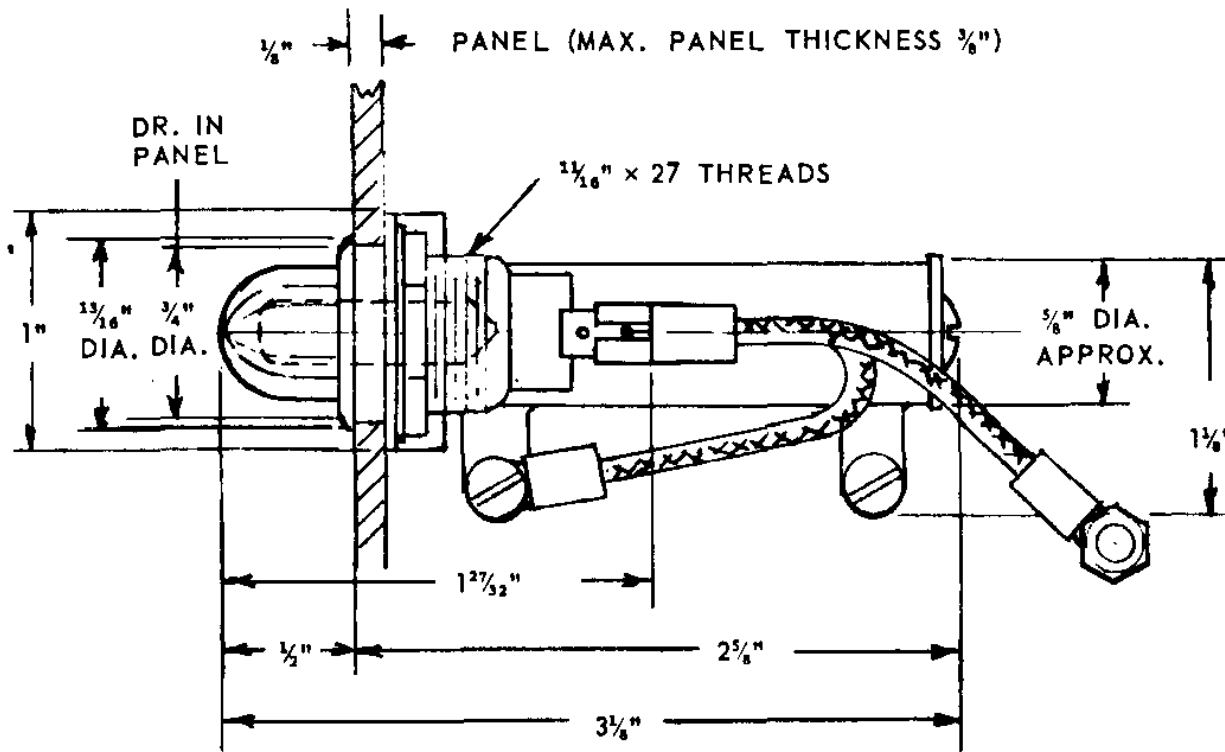
1. Color Lens
2. Bracket
3. Bulb
4. Housing
5. Lock Washer
6. Lock Nut
7. Wire Jumper
8. Resistor
9. Resistor Mounting Hardware

DISASSEMBLED INDICATION LAMP 18X2888-01

68024



INDICATING LAMP ASSEMBLIES
24, 48, 110 to 125, 220 to 250 Volts Ac or Dc



TYPICAL ARRANGEMENT