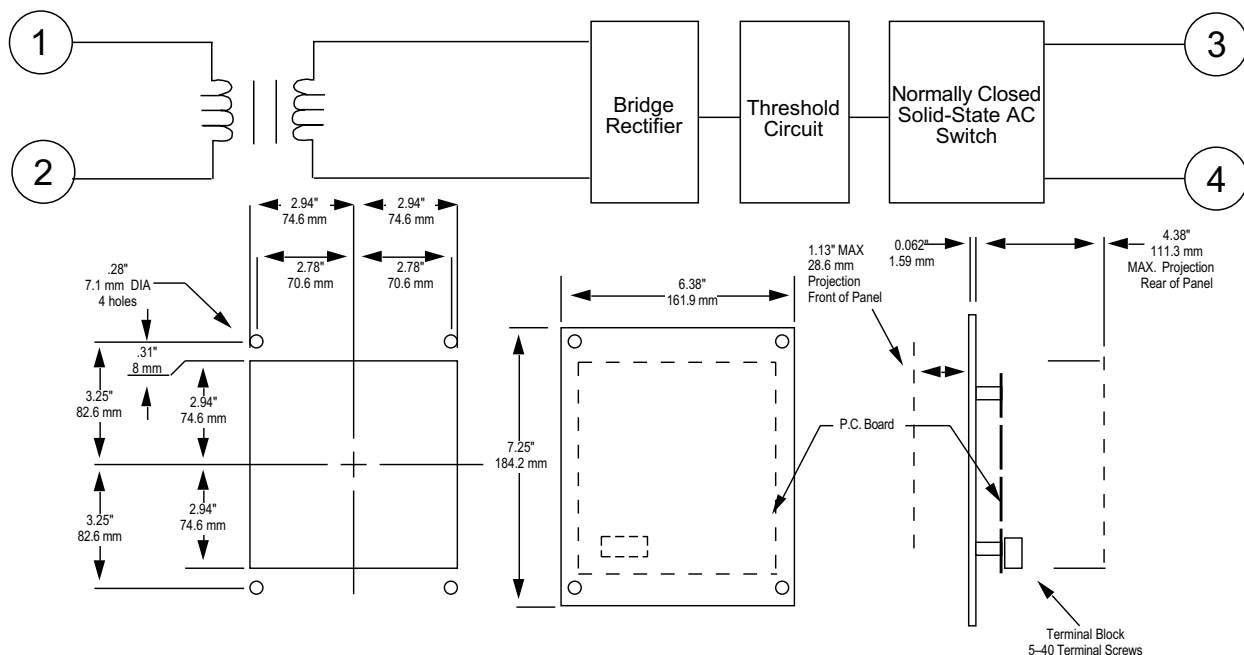


AC Current Relay

M-0127A/M-0170A



- M-0127A intended for use in 0.2 A circulating current circuit of paralleled LTC transformers to guard against damaging excessive circulating current
- M-0170A prevents damage to LTC transformer's switching mechanism under excessive loads
- Available in:
 - M-0127A: 0.01 to 0.1 Amps
 - M-0170A: 0.2 to 0.4 Amps
- Both relays can be used in other current and voltage-sensing applications



- CUTOUT DIMENSIONS**
- OUTLINE DIMENSIONS**
- INPUT**
- All solid-state design, transient protected.
 - Two terminal input, transformer isolated from the output.
 - Current setting adjusted with a calibrated dial.
- M-0127A: 10 mA to 100 mA ac current range. 50/60 Hz, will withstand 2.5 A for one second.
 M-0170A: 200 mA to 400 mA ac current range. Withstand 10 A for one second.
- INPUT BURDEN**
- M-0127A: 100Ω to 500Ω dependent upon setting.
 M-0170A: 2 Ω.
- OUTPUT**
- Two terminal ac switch (triac), normally conducting. Opens on input current above threshold setting. Rated 1 A at 120 V ac. Transient and overload protected. Load must not be highly capacitive. Auxiliary relay can provide parallel alarm function. Open circuit impedance: 20 K.
- TEMPERATURE RANGE**
- Unit will operate properly from -40° C to +85° C.
- PHYSICAL**
- Size: 7-1/2" high x 6-6/16 wide x 4-3/8 deep (19.05 cm x 16.19 cm x 11.13 cm).
 Approximate Weight: 1.4 lbs. (0.6 kg).
 Approximate Shipping Weight: 3 lbs. (1.4 kg).
- PATENT**
- U.S. Patent 3,883,782.
- WARRANTY**
- The M-0127A/M-0170A is covered by a two-year warranty from date of shipment.



BECKWITH ELECTRIC CO., INC.
 6190 – 118th Avenue North • Largo, Florida 33773-3724
 PHONE (727) 544-2326 • FAX (727) 546-0121
 E-MAIL becomktg@psinet.com
 WEBSITE <http://www.beckwithelectric.com>